



**LITTLE WALTHAM**  
C.E.V.A. Primary School

# WEEKLY NEWS

*Aspiring to inspire others towards excellence*

Spring Term – Edition 15, 3<sup>rd</sup> May 2024



@LittleWalthamPS



Dear Parents,

I hope everyone is looking forward to a well-deserved break over the bank holiday weekend. As always, I'm thrilled to share some highlights from another eventful week at Little Waltham.

Our Year 2 pupils showcased their sporting talent at the 3 Tees Cricket Tournament held at New Hall School. With enthusiasm and determination, eight of our pupils represented our school, demonstrating not only their skills on the field but also exemplary sportsmanship. Their efforts paid off, as they secured third place in the tournament. A thank you goes out to Mr. Tilsley for his dedication and organisation towards this event.

Forest School developments have continued this half term to create a natural learning environment for our pupils. With newly established trails, wildlife and seating areas, our pupils have begun exploring the area during lunchtimes. Looking ahead, we're looking forward to introduce sessions for our youngest pupils in the upcoming Summer term.

On Wednesday afternoon, we had our regular visit from George the dog. Making his rounds across various classrooms, including Year 6, children read their favourite books to George and welcomed him to their class.

Lastly, Chestnut and Elm classes joined forces for a collaborative lesson, sharing their knowledge and learning experiences. The enthusiasm demonstrated by our pupils was great to see and pupils worked well to communicate their learning to one another.

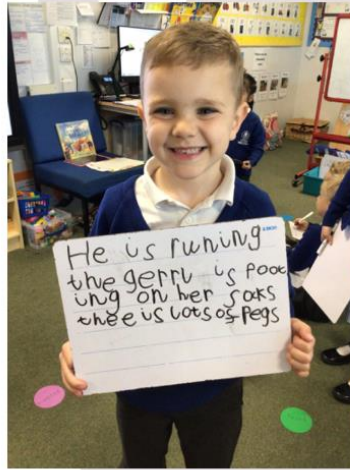
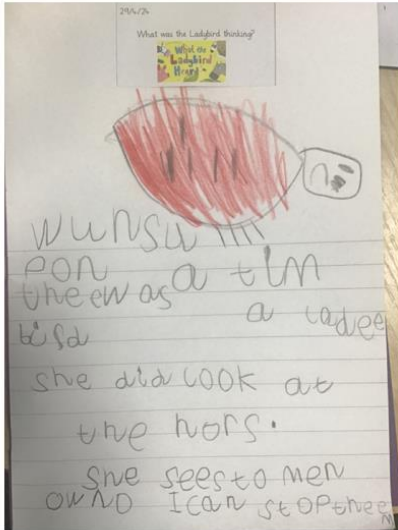
As we head into the bank holiday weekend, I wish everyone a relaxing bank holiday and I look forward to welcoming our pupils back on Tuesday.

Warm regards,

Mr. S. Saunders  
Headteacher

## Work of the Week

Ash Class



### Work of the Week

Ash Class

Arthur has worked really hard on his writing. Independently thinking of sentences and using his letters and sounds with great confidence.

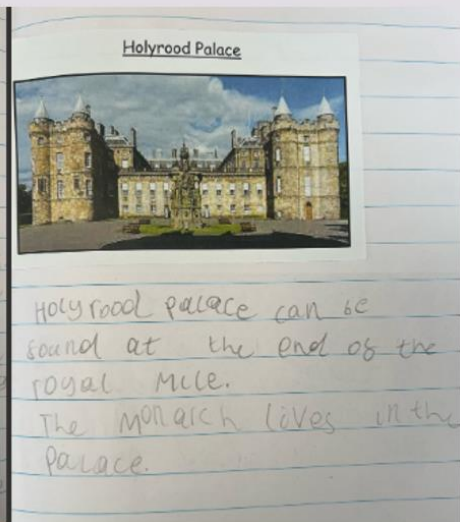
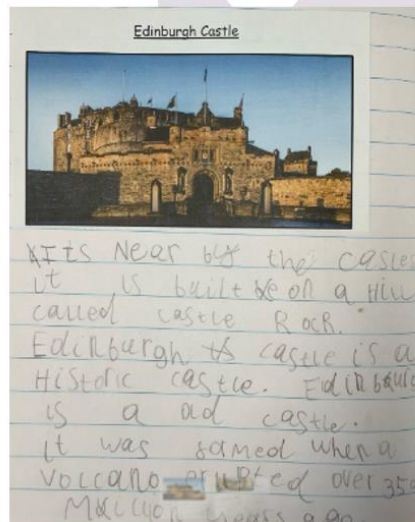
## Work of the Week

Chestnut Class

### Work of the Week

Chestnut Class – Myla

Myla for an informative piece of writing exploring the characteristics of Scotland, finding some very interesting facts to share.



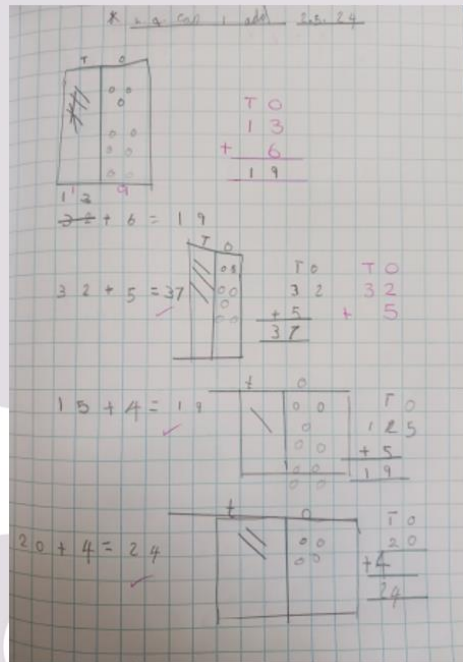
# Work of the Week

## Elm Class

### Work of the Week

Elm Class – Lilly

Lilly for some super work in mathematics this week on addition.



# Work of the Week

## Maple Class

### Work of the Week

Maple Class – James and Poppy D

James and Poppy D for working hard in English to collect a range of powerful vocabulary for each of the different images.

	Adjectives	Verbs and adverbs	Simile and metaphors
	Delicate, fragile, snowflake, intricate, mesmerising pattern.	Floating gently	As unique as a fingerprint, Drifting like a feather.
	Chocolate, brown, leaves, blurring onto the dark, deep floor.	floating, thought, the gentle breeze.	as crunchy as a crunch, 's a crisp.
	immaculate, individualistic, majestic and powerful, swish, mostly.	Swinging, rapidly, swiftly.	drifting as fast as a hawk.
	Vibrant, bright, rain, shining, soaking rain drops.	spinning, dancing, jangle, dispersed, over.	like a train, as hot as a pool.
	yellow, hot, sun, boiling sun, with sit.	boiling hot sun, fluffily white clouds.	as hot as the dark.

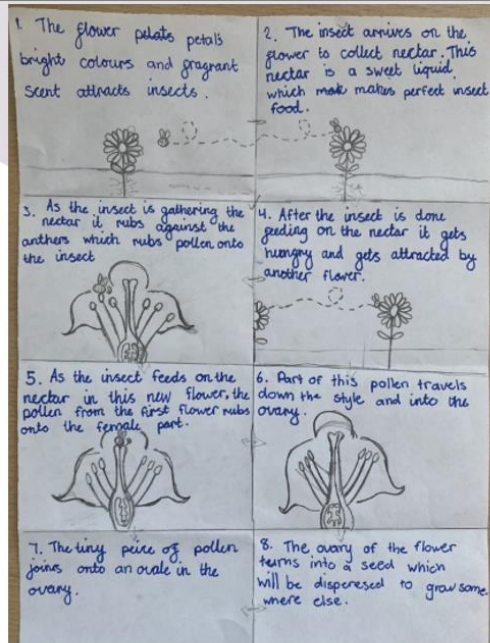
# Work of the Week

## Sycamore Class

### Work of the Week

Sycamore Class – George

George for some great work in Science on the pollination process. Fantastic presentation too!



# Work of the Week

## Oak Class

### Work of the Week

Oak Class – Amalie

Amalie for fantastic work with rounding decimals and beautifully presented too!

Q2. How do we use rounding to estimate?

1)  $13.6 \times 4$

2)  $2.68 \times 7$

3)  $4.94 \times 6$

4)  $2.96 \times 4$

5)  $8.7 \times 10$

6)  $1.252 \rightarrow 1.3$

7)  $4.40 \rightarrow 4.4$

8)  $9.20 \rightarrow 9.2$

9)  $7.30 \rightarrow 7.3$

10)  $2.45 \rightarrow 2.5$

11)  $2.43 \rightarrow 2.4$

12)  $1.911 \rightarrow 1.9$

13)  $1.223 \rightarrow 1.2$

14)  $3.78 \rightarrow 3.8$

15)  $5.35 \rightarrow 5.4$

16)  $3.45 \rightarrow 3.5$

17)  $8.30 \rightarrow 8.3$

18)  $9.20 \rightarrow 9.2$

19)  $10.65 \rightarrow 11$

20)  $12.52 \rightarrow 13$

21)  $9.80 \rightarrow 10$

Round to the nearest pound to estimate the cost of...

a) A robot and a train

b) A remote-control car and a fidget spinner

c) A teddy bear and a kite

d) Playing cards, roller skates and a yo-yo

e) A Gamebox, a packet of crayons and a train

f) A yo-yo, a teddy bear and a robot

g) A remote-control car, a kite and building blocks

h) A doll, a train and two fidget spinners

22)  $9.20 \rightarrow 9$

23)  $5.35 \rightarrow 5$

Total:  $11$

24)  $1.252 \rightarrow 1.3$

25)  $4.40 \rightarrow 4.4$

26)  $9.20 \rightarrow 9.2$

27)  $7.30 \rightarrow 7.3$

28)  $2.45 \rightarrow 2.5$

29)  $2.43 \rightarrow 2.4$

30)  $1.911 \rightarrow 1.9$

31)  $1.223 \rightarrow 1.2$

32)  $3.78 \rightarrow 3.8$

33)  $5.35 \rightarrow 5.4$

34)  $3.45 \rightarrow 3.5$

35)  $8.30 \rightarrow 8.3$

36)  $9.20 \rightarrow 9.2$

37)  $10.65 \rightarrow 11$

38)  $12.52 \rightarrow 13$

39)  $9.80 \rightarrow 10$

Total:  $34$

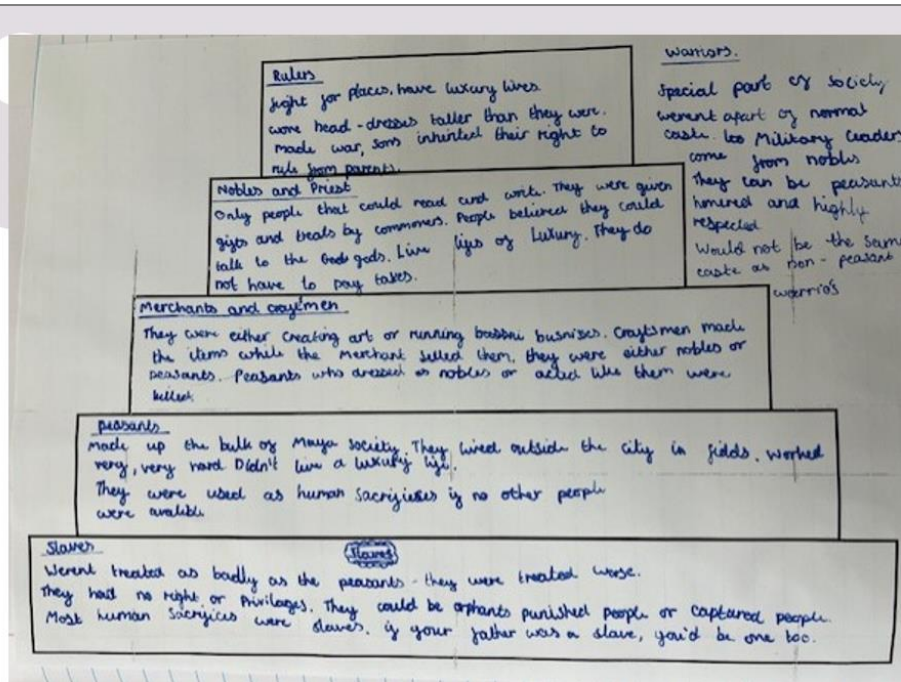
## Work of the Week

Willow W Class

### Work of the Week

Willow W Class – Ava

Ava Lane, for a fantastic lesson learning about the social hierarchy of Mayan society. Thoughtful work and clear presentation of information to the rest of the class.

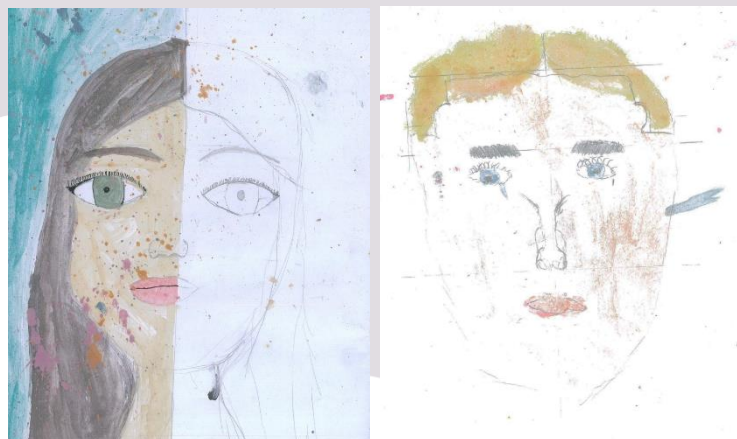


## Work of the Week

Willow B Class

### Work of the Week

Self-portraits using watercolour. Sonny and Mattie produced some beautiful work.



## *Chestnut Class reading to Elm Class*

This week it was lovely to witness our year 1 and year 2 children coming together to share their learning.



## Cricket

Eight Elm children took part in a 3T cricket competition at Newhall School on Monday.



## ***Bags2School***

On Friday 17<sup>th</sup> May @9am, 'Bag2School' will be collecting preloved clothing and accessories from Little Waltham Primary School. Please drop off any bags to the school office during Thursday 16<sup>th</sup> May.

Children will have a 'Bag2School' bag sent home with them today, which you can use to fill with any of the items listed below:

- Clean clothing
- Paired shoes
- Hats
- Scarves and Belts
- Household linen and bedding
- Household curtains
- Household Towels
- Soft toys
- Bags
- Bras



Please do not include school uniform.

You can also use bin bags if you have more items to donate.

## ***Summer Disco***

Get your dancing shoes ready..... The PTA are hosting a Summer Disco on Friday 10<sup>th</sup> May! Tickets are £3.50 and can be purchase via the schoolcomms app.

Please ensure you click the 'consent' button when on the app, and ensure you add an **emergency contact name & number** for the event in the comment box.





## **The BIG Question**

**Can you be brave and scared at the same time?**

### **Elm**

Yes – When I was learning to do a backflip. *Seren*

Yes – When I first started swimming classes. *Alanna*

Yes – When I go on fairground rides. *Henry*

### **Sycamore**

Yes you can because you can try really hard to do something you are scared of – *Henry C*

Yes you might be scared of the dark but you can be brave and go into it – *Olivia*

Yes because you can try and overcome your fear by being brave - *Anna*

### **Willow W**

Yes, because if you were facing a challenge you can be brave but scared to face it at the same time – *Gracie*

Yes, because even if you are confident there can be doubts that frighten you – *Grace*

No, because if you are brave you are not scared. Brave means not worried – *Dolly*

**This week's value is forgiveness.**

Dear God,

Dear God, thank You for sending Jesus to die on the cross so that we can have our sins forgiven. Thank You for forgiving my sins. Please help me to forgive others as You forgive us.

Amen

*For God so loved the world that he gave his one and only Son, that whoever believes in him shall not perish but have eternal life. **John 3:16***



<b>Ash</b>	<b>Wisdom</b> <i>Finley</i> for taking his time to think things through and make good choices as well as offering good solutions to others.	<b>Keeping on Going</b> <i>Blake</i> for keeping on going with his learning and not giving up especially with phonics.	<b>Arthur</b> For confidently and independently using his phonics to produce some lovely pieces of writing.
<b>Chestnut</b>	<b>Trust</b> <i>Luca</i> for being an example in all things. You can always be trusted to make the right choice and try your very best.	<b>Aiming High</b> <i>Adnan</i> for working hard in all his lessons and making the right choices in his behaviour.	<b>Myla</b> For an informative piece of writing exploring the characteristics of Scotland. Finding some very interesting facts to share.
<b>Elm</b>	<b>Koinonia</b> Maddie for working well with a partner in maths and tidying up after our art lesson.	<b>Aiming High</b> Frankie for making some good progress in her reading.	<b>Lilly</b> For working hard at her addition work in mathematics this week.
<b>Maple</b>	Betty for <b>aiming high</b> – getting involved in all class discussions and always on her work. Pushing herself and challenging herself in every piece of work.	Archie – <b>trust</b> , can always be trusted to focus in lesson and ready to learn. Can also be trusted to make really sensible decisions all the time.	
<b>Oak</b>	<b>Wisdom</b> <i>Jesse</i> for making good choices – I've been impressed by your learning attitude this week and how quickly you've settled to tasks.	<b>Risk Taker</b> <i>Isla</i> for pushing yourself to take risks and put your hand up more to answer questions – particularly in maths!	<b>Amalie</b> It has been great seeing your confidence grow in maths. You've done some great work with rounding decimals, and it was beautifully presented!
<b>Sycamore</b>	<b>Reverence</b> Hugo for discussing ideas about Judaism thoughtfully.	<b>Aiming High</b> Henry F for aiming high with his writing when writing with a negative tone.	<b>George</b> for great Science work on the pollination process. Clear diagrams and super presentation. 😊
<b>Willow W</b>	<b>Creation</b> Phoenix B- for a thoughtful work in art this week. Great self-portrait sketches and some wonderful observations about the artwork we are currently studying.	<b>Aiming High</b> Leo- for a fantastic attitude, great focus and for working hard in all lessons this week.	<b>Ava</b> For a fantastic lesson learning about the social hierarchy of Mayan society. Thoughtful work and clear presentation of information to the rest of the class.
<b>Willow B</b>	Harrison – for always trying his best and for achieving 100% in his arithmetic yesterday.	Anusha for always making the right choice and working hard.	Sonny and Mattie for producing beautiful self-portraits in watercolour.

## Dates for the diary

### **Non-Pupil Days**

Monday 3<sup>rd</sup> June 2024

Monday 2<sup>nd</sup> September 2024

Tuesday 3<sup>rd</sup> September 2024

Friday 23<sup>rd</sup> May 2025

Monday 21<sup>st</sup> July 2025

Tuesday 22<sup>nd</sup> July 2025

<b>May 2024</b>		
Monday 6 <sup>th</sup> May		BANK HOLIDAY
Friday 10 <sup>th</sup> May		School Disco – tickets available on Schoolcomms
Mon 13 <sup>th</sup> May – Fri 17 <sup>th</sup> May		SATS Week
Friday 17 <sup>th</sup> May		Faith Day - Pentecost
Monday 20 <sup>th</sup> – Fri 24 <sup>th</sup> May		KS1 SATs Week
Wednesday 22 <sup>nd</sup> May	9am	Year 3 Assembly
Monday 27 <sup>th</sup> May		BANK HOLIDAY
Monday 27 <sup>th</sup> – Fri 31 <sup>st</sup> May		HALF TERM
<b>June 2024</b>		
Monday 3 <sup>rd</sup> June		INSET DAY
Thursday 13 <sup>th</sup> June	9am	Reception Assembly
Tuesday 4 <sup>th</sup> – 14 <sup>th</sup> June		Time Table Screening
Monday 10 <sup>th</sup> – Fri 14 <sup>th</sup>		Phonics Screening Week
Wednesday 5 <sup>th</sup> June	AM	Yr2 Minigames
Wednesday 5 <sup>th</sup> June	All Day	Ash Class – Wilderness Trip
Thursday 6 <sup>th</sup> June	9am	'Sex & Relationship Education' Parent Meeting
Friday 7 <sup>th</sup> June	All Day	Chestnut Class - Wilderness Trip
Thursday 13 <sup>th</sup> June	All Day	Maple Class – Wilderness Trip
Wednesday 19 <sup>th</sup> June	All Day	Oak Class – Wilderness Trip
Thursday 20 <sup>th</sup> June	9am	Year 1 Assembly
Friday 21 <sup>st</sup> June	All Day	Sycamore Class - Wilderness Trip
Monday 24 <sup>th</sup> – 26 <sup>th</sup> June		Yr. 6 Residential
Thursday 27 <sup>th</sup> June		Junior Music Festival
Friday 28 <sup>th</sup> June	9am	Beaulieu Yr6 Induction Day
<b>July 2023</b>		
Wednesday 3 <sup>rd</sup> July	9:30am	Sports Day and family picnic
Friday 5 <sup>th</sup> July		KS2 Author visit 'Kyan Green'
Saturday 6 <sup>th</sup> July		Summer Fete
Monday 8 <sup>th</sup> July	2:30pm	Rocksteady Summer Concert
Wednesday 10 <sup>th</sup> July	All Day	Willow Class – Wilderness Trip
Tuesday 16 <sup>th</sup> July	9am	Macbeth Production Year 4
Thursday 18 <sup>th</sup> July	2pm & 6pm	Year 6 Production
Friday 19 <sup>th</sup> July		PTA Inflatables
Monday 22 <sup>nd</sup> July		Reports to Parents
Monday 22 <sup>nd</sup> July	TBC	End of Year Presentations
Tuesday 23 <sup>rd</sup> July	TBC	Leavers Assembly

Class Assemblies		
Wednesday 22 <sup>nd</sup> May	9am	Year 3
Thursday 13 <sup>th</sup> June	9am	Reception
Thursday 20 <sup>th</sup> June	9am	Year 1

## Essex County Council School Term and Holiday Dates for Community and Voluntary Controlled Schools - Academic Year 2024-2025

September 2024							October 2024							November 2024							December 2024						
M	T	W	T	F	S	S	M	T	W	T	F	S	S	M	T	W	T	F	S	S	M	T	W	T	F	S	S
						1		1	2	3	4	5	6					1	2	3							1
2	3	4	5	6	7	8	7	8	9	10	11	12	13	4	5	6	7	8	9	10	2	3	4	5	6	7	8
9	10	11	12	13	14	15	14	15	16	17	18	19	20	11	12	13	14	15	16	17	9	10	11	12	13	14	15
16	17	18	19	20	21	22	21	22	23	24	25	26	27	18	19	20	21	22	23	24	16	17	18	19	20	21	22
23	24	25	26	27	28	29	28	29	30	31				25	26	27	28	29	30		23	24	25	26	27	28	29
30																					30	31					
January 2025							February 2025							March 2025							April 2025						
M	T	W	T	F	S	S	M	T	W	T	F	S	S	M	T	W	T	F	S	S	M	T	W	T	F	S	S
		1	2	3	4	5						1	2						1	2		1	2	3	4	5	6
6	7	8	9	10	11	12	3	4	5	6	7	8	9	3	4	5	6	7	8	9	7	8	9	10	11	12	13
13	14	15	16	17	18	19	10	11	12	13	14	15	16	10	11	12	13	14	15	16	14	15	16	17	18	19	20
20	21	22	23	24	25	26	17	18	19	20	21	22	23	17	18	19	20	21	22	23	21	22	23	24	25	26	27
27	28	29	30	31			24	25	26	27	28			24	25	26	27	28	29	30	28	29	30				
														31													
May 2025							June 2025							July 2025							August 2025						
M	T	W	T	F	S	S	M	T	W	T	F	S	S	M	T	W	T	F	S	S	M	T	W	T	F	S	S
			1	2	3	4						1			1	2	3	4	5	6					1	2	3
5	6	7	8	9	10	11	2	3	4	5	6	7	8	7	8	9	10	11	12	13	4	5	6	7	8	9	10
12	13	14	15	16	17	18	9	10	11	12	13	14	15	14	15	16	17	18	19	20	11	12	13	14	15	16	17
19	20	21	22	23	24	25	16	17	18	19	20	21	22	21	22	23	24	25	26	27	18	19	20	21	22	23	24
26	27	28	29	30	31		23	24	25	26	27	28	29	28	29	30	31				25	26	27	28	29	30	31
							30																				

= Schooldays     
 = School holidays     
 = Bank holidays  
 = Weekends

In addition, schools allocate five non-pupil days out of the school days indicated, or the equivalent in disaggregated twilight sessions.

<b>Autumn Term:</b>	Monday 2 September 2024 – Friday 20 December 2024 <i>Half Term 28 October – 1 November</i>	75 days
<b>Spring Term:</b>	Monday 6 January 2025 – Friday 4 April 2025 <i>Half Term 17 February - 21 February</i>	60 days
<b>Summer Term:</b>	Tuesday 22 April 2025 – Tuesday 22 July 2025 <i>Half Term 26 May – 30 May, and May Bank Holiday - 5 May</i>	60 days
		195 days

**Please note:**

The above dates may vary for individual schools, especially Foundation, Voluntary Aided schools and Academies.

You are strongly advised to check with your child's school before making any holiday or other commitments.