



LITTLE WALTHAM
C.E.V.A. Primary School

WEEKLY NEWS

Aspiring to inspire others towards excellence



@LittleWalthamPS



Spring Term – Edition 4, 26th January 2024

This week, our Year 3 pupils had a superb school trip to Colchester Castle to deepen their understanding of Roman history. It was a memorable day filled with exploration and discovery as the children enriched their learning about the Romans in Britain. They had the opportunity to examine various artefacts, explore the Roman ruins beneath the castle, and learn about Boudicca's siege on Colchester. In the afternoon, they worked collaboratively to construct a Celt Roundhouse and a Roman Villa, showcasing their creativity and teamwork. I'm delighted to report that the children's attitudes and behaviour were exemplary throughout the entire day.

We were delighted to have our therapy dog, George, back with us on Wednesday afternoon! His presence brought smiles to the faces of our children as he visited some of our classes and listened attentively to our young readers. We're grateful for the positive impact he has on our school community.

On Fridays, Colchester United is offering a special football lunchtime club this half term for our Year 5 and 6 pupils. This presents a fantastic opportunity for our students to develop their football skills and foster teamwork.

Furthermore, Colchester United have been delivering special PE sessions for Year 5 and 4 on Friday afternoons, focusing on the importance of maintaining a healthy lifestyle and regular exercise. We believe these sessions will not only promote physical well-being but also support habits of health and fitness among our pupils.

Lastly, I kindly remind all parents to refrain from parking on the double yellow lines outside the school premises. Ensuring the safety of our students and families is our top priority, and responsible parking practices play a crucial role in maintaining a secure environment for everyone. Your cooperation and consideration are greatly appreciated.

Thank you for your ongoing support and I hope everyone has a fantastic weekend.

Warm regards,

Mr S Saunders
Headteacher

Colchester Castle

Maple Class Visit



A visit from George

Willow Class



Bags2School

Wednesday 31st January



REMINDER

Bag2School will be collecting used clean clothes and soft toys from Little Waltham Primary School on Thursday 1st February at 9am.

Please bring your bin bag (or bags!) to the school office on **Wednesday 31st January**. Items brought in before or after this date will **not** be accepted.

Below is a list of items that are eligible for collection (please refer to <https://bag2school.com> for further information):

- Clothes
- Paired Shoes (tied together)
- Handbags
- Hats
- Bags
- Scarves & Ties
- Bras
- Jewellery
- Socks
- Belts
- Soft Toys
- Household Curtains
- Household Linen
- Household Towels
- Household Bedding

Bag2School will only accept items in tied bin bags and not supermarket style 'bags4life'.

The Big Question

'What does it mean to be responsible?'

Chestnut

If we don't get things right, we just try again and do it ourselves- Lilly
We should do more work ourselves and write longer sentences- Julia
We should be responsible and listen more, so we know what to do – Harry
We should be responsible to look after our own things – Robin
If we get something wrong, it is our responsibility to get it right and keep going- Alayhan
Being responsible means, we should get better at doing something ourselves- Myla

Elm

Complete jobs on your own – Emelia
Help people if they are alone – Florence and Freddie
Help people if they are hurt - everyone
Be independent – Ivy

Sycamore

Making the right choices – Henry F
Doing things on your own and doing them sensibly – Hugo
Looking after your property and not breaking it – Anna
You can be trusted to do something – Amelia
People can rely on you and you can be more grown up – Henry C
You take responsibility for your actions – Thomas

Willow B

If you have a job, you are then trusted to do it properly – Libby
Being responsible is taking care of what is yours – Aneeka
Keeping everyone safe – Sonny
I am responsible for: Looking after myself and keeping myself healthy- Tristan
Taking care of my brothers – Mattie
Keeping fit and active, spending time outside – Sonny
As a class we have a responsibility to be a role model to the younger children- Effie
Have high expectations of ourselves – Freddie
Show courage and be brave – Whole class



This week's value is reverence.

Dear Creator God,

Help us to remember always that everyone is your creation and your child. Give us the patience to treat others with the consideration and deep respect that they deserve.

Amen

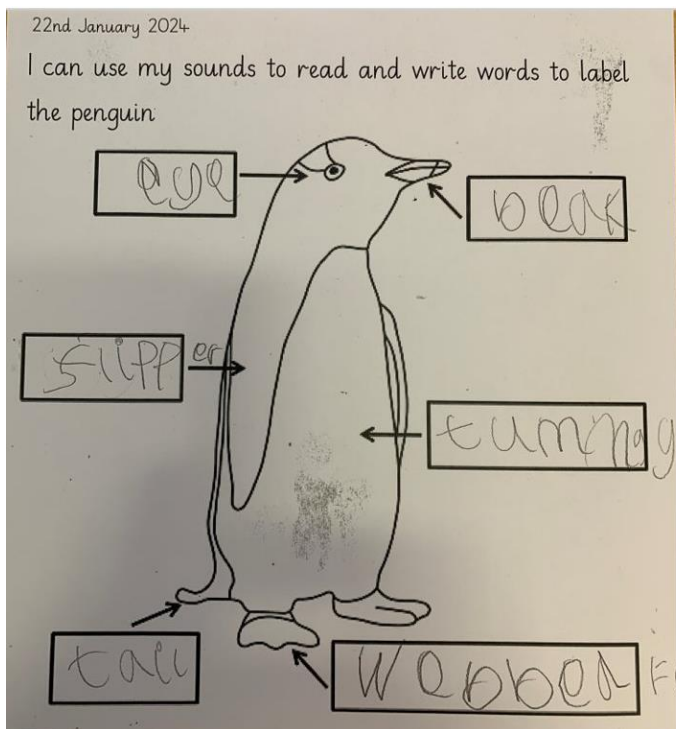
Therefore, since we are receiving a kingdom that cannot be shaken, let us be thankful, and so worship God acceptably with reverence and awe.'

Hebrews 12:28



Work of the Week

Ash Class



Work of the Week

Ash Class

Sajaani

Sajaani worked with great confidence.

Work of the Week

Chestnut Class

Work of the Week

Chestnut class

Annabelle

Annabelle for working so hard in locating and naming continents and oceans. We were blown away by your beautiful presentation
Annabelle, keep up the good work!



Work of the Week

Elm Class



1.0 add detail 24.1.24

once upon time there was a dog called Dogger. soon Dave went to pick up Bella and went to get an ice cream suddenly Dave spotted Dogger and when Dave got home he was a little bit quiet. Then the next day came and so they got dressed and went to the school fair. Just then Dave spotted Dogger and ran to Bella and told her clearly a little girl brought Dogger to you. A little while later Bella asks the little girl if they can swap and the little girl agreed and Dave stopped clogging. Meanwhile when they got home Bella did gymnastics on her bed and Dave was tucked in bed all snuggly and so fond because of Bella and will never let Dogger out of his back.

15.1.24

Dave ran and got his cloths on and had some breakfast and so again woke up but then quickly ran to school because she was late and she missed her favorite part of school. She sighed next.

Success Criteria	
Capital letters	✓ ✓
Full stops	✓ ✓
Linking words Soon, just then, after that, next.	✓ ✓
Use an adverb quickly	✓ ✓

Work of the Week

Elm Class

Freddie

Excellent writing adding detail and linking ideas.

Work of the Week

Maple Class



Wednesday 24th January 2024

I.O: to compare and group together different types of rocks

Granite: heavy, rough, hard, smooth.

Sandstone: stripy, smooth, hard and heavy.

Chalk: crumbly, all white, soft, flat & light.

Slate: crumbly, smooth, light.

```

    graph TD
      Q1{Is it hard?} -- Yes --> Q2{Is it stripy?}
      Q1 -- No --> Q3{Is it all white and crumbly?}
      Q2 -- Yes --> A1[sand stone]
      Q2 -- No --> A2[granite]
      Q3 -- Yes --> A3[chalk]
      Q3 -- No --> A4[slate]
  
```

Work of the Week

Maple class

Sanav

Sanav worked hard at describing the different properties of some rocks and then compared and grouped them into a flow chart in order to identify them.

Work of the Week

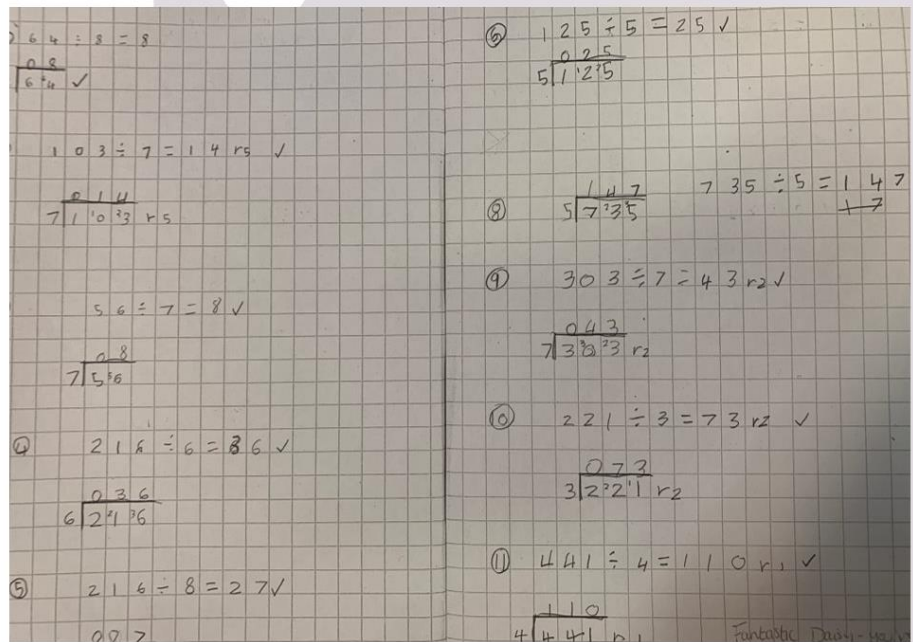
Oak Class

Work of the Week

Oak Class

Daisy

Great perseverance with division this week and fantastic progress with the short division algorithm.



Work of the Week

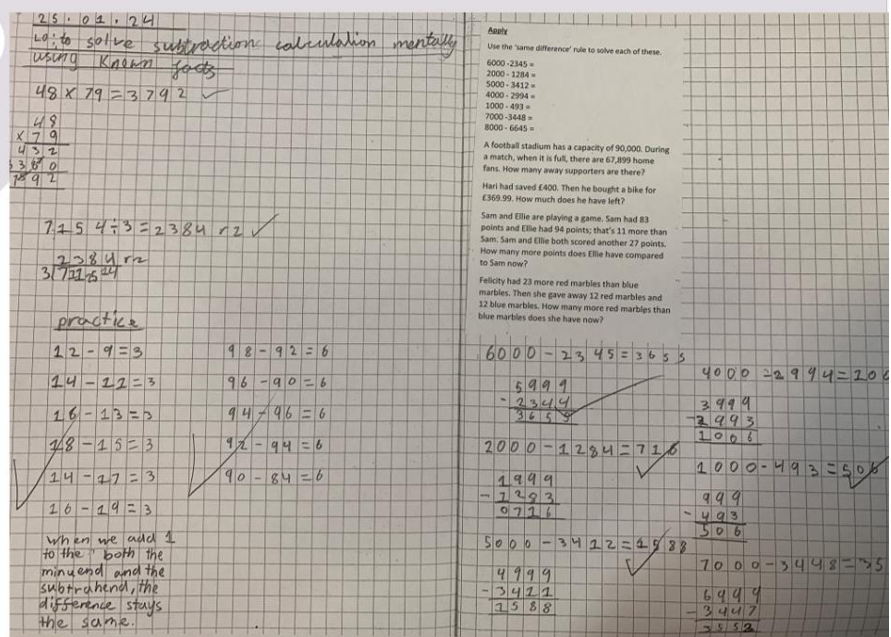
Sycamore Class

Work of the Week

Sycamore Class

Amelia

Amelia worked hard on using the strategies she has been taught and improved presentation.



Work of the Week

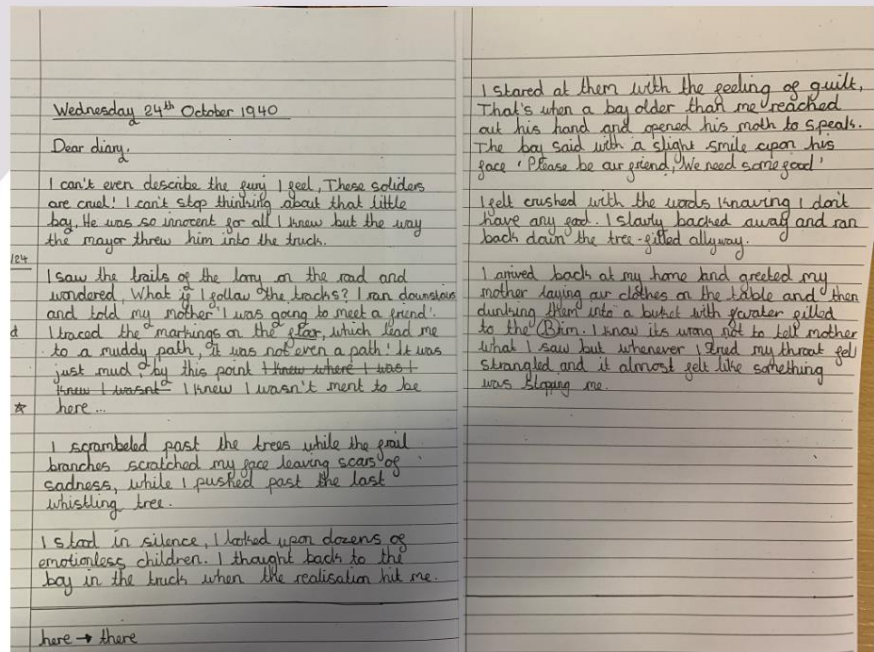
Willow Class W

Work of the Week

Willow W

Phoenix B

Excellent presentation and diary writing.



Work of the Week

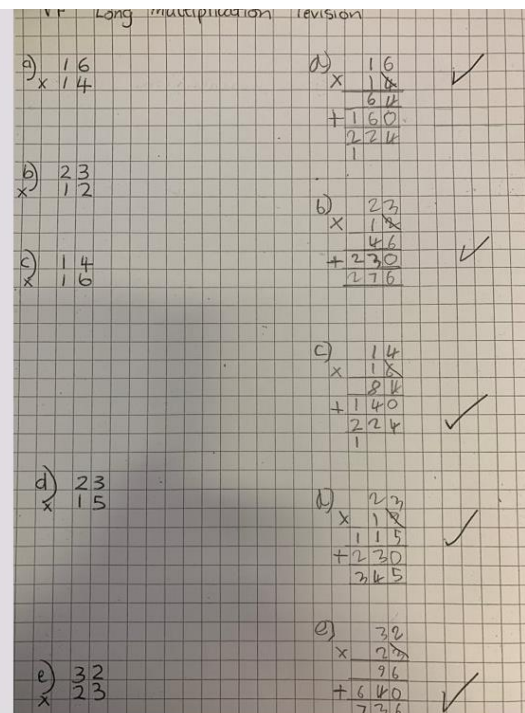
Willow Class B

Work of the Week

Willow B

Marshall

Great effort and progress with long multiplication.



	Value Award	Super Skill Award	Work of the week
Ash	Trust Charlie can always be relied upon to follow instructions carefully. He is a great role model!	Aiming High Freddie for challenging himself to spell tricky words in phonics this week.	Sajaani – For excellent writing when labelling her penguin.
Chestnut	Trust <i>Alayhan</i> who can always be trusted to be making the right choices and working hard.	Risk taker <i>Myla</i> . If a challenge is set Myla wants to achieve it and go one step further. Well done for always giving your learning your best effort!	
Elm	Trust Abel for being able to work independently and finish his tasks in lessons.	Keep on Going Dakota for working hard at his arithmetic skills during early morning work.	Freddie Turner for some excellent writing. His writing included lots of detail and he linked his ideas together.
Maple	Endurance <i>Gentilia</i> – even though she was feeling nervous about the trip, she pushed herself out of her comfort zone and got really stuck in and ended up having so much fun. So proud of you!	Enthusiasm <i>The whole of Maple class</i> – We had our trip this week and everyone was actively participating, asking lots of questions and being curious and excited about everything we did and learnt.	
Oak	Reverence <i>Rafferty</i> for being a polite and respectful member of class.	Being enthusiastic <i>Varish</i> for showing fantastic enthusiasm towards division this week.	Daisy for showing great perseverance with division this week and making fantastic progress using the bus stop method.
Sycamore	Reverence Shreya for always being a respectful member of the class and having a great attitude.	Aiming High Steve for great focus and participation in lessons this week.	Amelia for working hard in mathematics applying the strategies she had been taught and improving her presentation.
Willow W			Phoenix B For a brilliant diary entry- lots of emotive language, superb vocabulary and excellent presentation.
Willow B	Trust Anusha can always be trusted to make wise choices. A fantastic role model around school!	Aiming high Liam for always being determined and resilient when completing a challenge.	Marhsall – Great effort and progress when completing long multiplication calculations.



This week's lunchtime awards go to:

KS1 – Lilly in Elm Class for being very polite.

KS2 – Rebekah in Oak for having lovely manners.

Dates for the diary

Non-Pupil Days

Monday 3rd June

January 2024		
Wednesday 31 st January		Bags2School – clothing drop off
Thursday 1 st Feb	9am	Bag2School Collection
February 2024		
Mon 5 th – Fri 9 th Feb		Children’s Mental Health Week
Tuesday 6 th Feb	AM	Yr4 Superstars
Thursday 8 th Feb	9am	Year 2 Assembly
Tuesday 13 th Feb	TBC	Parents Evening
Thursday 15 th Feb	TBC	Parents Evening
Mon 19 th – Fri 23 rd Feb		HALF TERM
March 2024		
Wednesday 6 th March	11am-6pm	Yr5 Wicked Trip
Thursday 7 th March		World Book Day
Wednesday 13 th March		Yr6 Trip – Milden Hall
Friday 17 th March		Comic Relief TBC
Tuesday 19 th March	9am	Year 4 Assembly
Tuesday 26 th March		Faith Day – Easter Faith Day
Wednesday 27 th March	2pm	Speech Festival
Wednesday 27 th March		Reports to Parents
Friday 29 th – Mon 1 st April		BANK HOLIDAY
April 2024		
Tuesday 2 nd – Fri 12 th April		HALF TERM
May 2024		
Wednesday 1 st May	9am	Reception Assembly
Monday 6 th May		BANK HOLIDAY
Mon 13 th May – Fri 31 st May		SATS Week
Friday 17 th May		Faith Day - Pentecost
Monday 20 th – Fri 25 th May		KS1 SATs Week
Wednesday 22 nd May	9am	Year 3 Assembly
Monday 27 th May		BANK HOLIDAY
Monday 26 th – Fri 31 st May		HALF TERM
June 2024		
Monday 3 rd June		INSET DAY
Tuesday 4 th – 14 th June		Time Table Screening
Wednesday 5 th June	AM	Yr2 Minigames
Thursday 6 th June	9am	‘Sex & Relationship Education’ Parent Meeting
Monday 10 th – Fri 14 th		Phonics Screening Week
Thursday 20 th June	9am	Year 1 Assembly
July 2023		
Wednesday 3 rd July	9:30am	Sports Day and family picnic
Tuesday 16 th July	9am	Macbeth Production Year 4
Thursday 18 th July	2pm & 6pm	Year 6 Production
Monday 22 nd July		Reports to Parents
Monday 22 nd July	TBC	End of Year Presentations
Tuesday 23 rd July	TBC	Leavers Assembly

Class Assemblies		
Wednesday 29 th November	9am	Year 6
Thursday 8 th Feb	9am	Year 2
Tuesday 19 th March	9am	Year 4
Wednesday 22 nd May	9am	Year 3
Wednesday 1 st May	9am	Reception
Thursday 20 th June	9am	Year 1

GOOD TIMEKEEPING



What to do the night before:

Get everything you need for school ready



Set your alarm allowing plenty of time

Make your lunch and drink if you bring a packed lunch to school



Turn off devices half an hour before bedtime

Have a good night's sleep - a minimum of eight hours!



Five minutes late per day soon adds up to three days of lost school time

For mental health support for young people
visit: www.youngminds.org.uk

Where does your child sit on the attendance mountain?

